



The Match

Summer 2022

www.mtef.com



Proof Positive

Five MTEF Alums Bring Programming Full Circle

There is no doubt that tennis plays an important role in what MTEF offers the youngsters it serves but turning out the next grand slam champion isn't at the top of what the foundation hopes to accomplish.

The goal, instead, is to help participants emerge from its

TEAM programming as well-rounded young adults with the kind of values and life skills that allow them to shine and succeed as they follow their dreams to fruition.

This summer, five alumni closed the circle by returning to MTEF Summer Camp, a starting point for many of them, as coaches.

Here, in their own words, are what MTEF has meant to them.

"I was in MTEF for about seven years... in both the summer and winter program," said Brielle Wade, a recent graduate of the program and an assistant coach at Merrill Park.

"MTEF has taught me life skills that I could take with me on and off the court. As I got older and became a coach within the program it has taught me more communication skills when it comes to the younger group as well as understanding the concept of being a good coach, she added.

Wade is majoring in kinesiology at UW-Madison.

Lailah Young, who started with MTEF as an 8-year-old, feels much the same. She also was an assistant coach at Merrill. *Continued on Page 8*



The five MTEF alumni who gave back by returning to coach this summer were (from left) Makayla Butler, Idris Badani, Lailah Young, Samiyah Braylock and Brielle Wade.

Fun Means Funding

23rd Tennis Ball Adds New Twists to Event

It's not going to be your grandfather's Tennis Ball! Nope! No way, although there will be many familiar elements!

The Ball is going to be lots of fun, which is why you should open your calendar to Saturday, Nov. 12 right now and write 23rd MTEF Tennis Ball in the 6 p.m. time slot.

With a theme of Serving Up Opportunity for Today's Youth, the Ball, MTEF's largest fundraiser, will return to the Italian Community Center, 631 E. Chicago St., which earned rave reviews last year. The goal this year is to net \$80,000. The funds will support the foundation's nationally recognized programming, examples of which fill the

pages of this newsletter.

So what's new this year?

For openers, you'll have an opportunity to pose for a caricature of yourself drawn by artist Dave Fliss as he wanders amongst the cocktail crowd.

And, for the first time in nearly 20 years, there will be no honorary chair. Instead, the evening program will focus on what MTEF is, what it offers and how it impacts the lives of its participants and their families.

What's not?

As usual, the event will kick off with cocktails and hors d'oeuvres as guests mingle amid a display of silent *Continued on Page 10*



A self caricature by Dave Fliss.

Inside

2 Executive Director's Message **3** Summer Memories **5** Tennis Director's Message **6** Grants and Gifts **9** New Directors

MTEF Officers and Directors

President: Michael Buckholdt
Treasurer: Christopher Schifano
Secretary: Sarah Cyganiak
Assistant Secretary: Kim Kirkpatrick

Directors: Michael Buckholdt, Mary Fran Cahill, Timon Corwin, Sarah Cyganiak, Jeffrey Davis, Donna Drosner, Trevor D'Souza, Makda Fessahaye, Elizabeth Horneffer, Kurt Janavitz, Mark Jensen, Ted Jordan, John Kendler, Charles Mulcahy, Thomas O'Byrne, Frank Parker, Caran Quadracci, Rajit Saluja, Denny Schackter, Christopher Schifano, Michael Sperling, Camille Taylor, Vukasin Teofamovic, Frank Thometz, Gina Vecera, Bridget Whitaker, Joanne Williams, Lisa Winders

Past Presidents

Charles Mulcahy (1975-2006)
David Pelisek (2006-2008)
Thomas O'Byrne (2008-2010)
Trevor D'Souza (2010-2012)
Michael Sperling (2012-2014)
Timon Corwin (2014-2016)
Elizabeth Horneffer (2016-2019)
Kurt Janavitz (2019-2021)

Advisory Board

John Austin, William Henk, Daniel O'Brien

MTEF Staff

Executive Director: Rachael Badt
Tennis Director: Anthony Broaden
Controller: Ann Keenan

Jacobs Skips From Court to Stage

Congratulations to MTEF's own Josiah Jacobs, who made his debut in the role of Travis Younger in the Skylight Music Theatre's April production of *Raisin*.

Set in 1950s Chicago, the Tony-winning musical, based on the play *Raisin in the Sun*, tells the story of a Black family's struggles and successes after they purchase a home in a previously all-White neighborhood.



Ross Zentner; courtesy of Skylight Music Theatre

Melanie Loren (Ruth Younger) and Josiah Jacobs (Travis Younger) in Skylight Music Theatre's production of *Raisin*.

Time Flies!

Badt Has Reflections Galore After a Year on the Job

By the time you read this newsletter, I will have celebrated my one-year anniversary with MTEF. Wow did that year fly by!

Coming into the organization, I certainly didn't understand the full scope of the impact MTEF makes. Our program has three main components to it – Summer, School Year TEAM, and After/In-School Programming. Each of them touches its audience in a unique way exposing them to a lifelong sport while helping build character and instilling life skills.

As I learned more about the organization, one of my focuses was building a community with our participants.

For those in our year-round program, we increased our communication with the families providing a weekly email touchpoint with us and we added family experiences like our King Richard movie screening and our trip to the Skylight Theater.

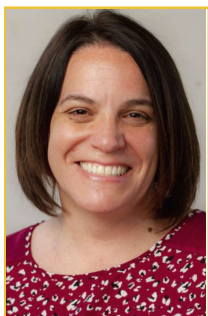
We worked to create the same improved community experience with summer, adding a parent handbook and increased picture posting to our communications as well as a family pool party at the Brown Deer Pond.

Now that I am headed into year two, it is time to reflect on what we do and how each piece aligns with our mission and vision. We do so many amazing things – just glancing through this newsletter or reading our bi-monthly e-newsletter *The Serve* you will see them.

I am eager to continue what is working and to improve or change up what might not be. If you have any thoughts on MTEF programming, please reach out, I would love to hear.

I am so honored that I have gotten the chance to start my MTEF journey with our tennis director, Tony Broaden. He has shown me the heart that comes with each groundstroke and serve. We wish him the best of luck in his new endeavor and I know I always will have a vision partner in him no matter what his involvement is with us. (See related column on Page 5.)

Thanks to all of you for your continued support and investment in MTEF. I look forward to seeing those who can join us at the 23rd Annual Tennis Ball on Nov.12.



Rachael Badt
Executive Director's Message



Summer Memories 2022



Cheers to our winners!

Yellow Advanced

1st: Israel Akinsanya
2nd: Tony Truong
Consolation winner: Samuel Gagnier
Consolation runner up: Izayah Briggs

Yellow Intermediate

1st: Gabriel Vasquez
2nd: Maurice Terry
Consolation winner: Saniya Simmons
Consolation runner up: Charly Heu

Green

1st: Haven Branderhorst
2nd: Shemar Tatum
Consolation winner: Dean Savage-Moyer
Consolation runner up: Jasmine Waters

Orange

1st: Trevin Wischer
2nd: Henry Laluzerne
3rd: François Adelon

Red

1st: Wesley Heu
2nd: Julius Giese
3rd: Delaina Weddle



Rachael Badt

Tony Truong concentrated on a backhand during competition in the Yellow Advanced division at MTEF's Summer Showdown.

Summer Showdown

An MTEF summer isn't complete without a little competition! And so it was that MTEF hosted its 2022 end of the summer tournament, Summer Showdown, August 1-4 at Merrill Park.

The tournament was a series of single day events with each day featuring a different division of play.

This year there were five divisions, all co-ed, based on age and skill level: Red (8-11), Orange (11-14), Green (12-14), Yellow Intermediate (14-18) and Yellow Advanced (14-18).

It was so exciting to see the players put the skills they learned over the summer to use. For many of the participants, Summer Showdown was their first tournament – ever!

MTEF is so proud of all of them for their courage and ambition to compete.



Tony and Israel



Maurice and Gabe



Shemar and Haven



Izayah and Sam



Charly and Saniya



Jasmine and Dean



Francois, Henry and Trevin



Julius, Wesley and Delaina

Get in the Game

What's better than a chance to participate in one sport? What about a trio of them!

That happened this summer when MTEF partnered with First Tee Southeast Wisconsin and America Scores for *Get in the Game Field Trip Days*.

Milwaukee Public Schools and local community learning centers (CLCs) were able to sign up to join us at Noyes Park for an afternoon of fun at one of three scheduled sessions. These field trips gave youngsters the opportunity to learn tennis, golf and soccer – three sports to which they don't have regular access. All participants, including MTEF summer campers engaged in all three sports.

MTEF met with kids from three Milwaukee Public schools – 95th Street, Riley and Academia de Lenguaje Y Belles Artes (ALBA) – as well as the Silver Spring Neighborhood Center and Neu Life, a CLC.

The program was enjoyed by all so MTEF is looking forward to continuing this program next summer..



The MTEF Aces included (from left) Marissa Jones, Lucas Lenhart, Sebastian Ordonez, Coach Idris Badani, Gabe Vasquez and Massimo Ordonez.

JTT Tournament

Sweltering heat. Rainclouds hovering not too far beyond the horizon. Not the best conditions but that didn't deter the folks presenting and participating in the 2022 Wisconsin Junior Team Tennis Summer championships in Sun Prairie – including two teams from the Milwaukee Tennis & Education Foundation. Match play stayed on time and play finished before the rain moved in.

The MTEF Slammers played in the tournament's US Open division, while the MTEF Aces competed in the Wimbledon division.

The Slammers – Izayah Briggs, Nolan Johnson, Benjamin Kastenmeier, Lola Lenhart and Maurice Terry – won 30 games.

The Aces – Marissa Jones, Lucas Lenhart, Massimo Ordonez, Sebastian Ordonez and Gabriel Vasquez – won 54.

Our teams were coached that day by Idris Badani and Andy Mountain and, of course, Tony Broaden.

Although MTEF didn't win, a lot of fun was had by all. It was a great summer tournament experience.

Coach Tony Broaden (center) works with youngsters from Neu Life at a Get in the Game session.

Rainbow Day Camp

MTEF's Summer Tennis Camp at Merrill Park had a new and adventurous component when the foundation became a Road to Rainbow partner for the Albert and Ann Deshur JCC Rainbow Day Camp. Road to Rainbow, funded by JCC donors, gives underserved children a chance to experience a rural day camp.

Each camper spent one week of each three-week session at RDC, in Fredonia (about 40 minutes north of Milwaukee). Bus transportation was provided as were snacks and lunch.

Lenny Kass, the RDC director, contacted MTEF last fall due to his prior working relationship with Rachael Badt, our executive director. He explained the program, noting RDC had eight beautiful full-size tennis courts just waiting for someone to use them. Kass, a tennis lover and player felt the MTEF was the perfect partner to breathe life back into the courts.

Each day at Rainbow was a bit different. Each started with tennis lessons then moved on to regular camp activities such as archery, rock climbing, a ninja course and gaga ball. The day ended each with swimming before heading back to Merrill to finish the day as a full camp.

For 99% of our campers this was their first experience at a country camp and they loved it.

When asked what they thought of this new experience parents responded with comments such as: "They love it!" "My kids looked forward to it!" and "The chance to go to Rainbow was amazing and the kids begged to go back for second session because of it."



Rock climbing at RDC.



Massimo Ordenez proudly showed off his new bike.

Serve & Connect Day

Sometimes something that's already special turns out to be absolutely extra special!

Serve & Connect Day, held June 4 at Sherman Park, turned out to be just that for Fatoumata Komara and Massimo Ordenez, who were the winners of the bike giveaway.

MTEF extends thanks to BCG Bike for their partnership and donating the bikes.

Thanks, too, to all of those who participated in the event, which is designed to bring not only MTEF participants and their families but also members of the surrounding community together with first responders for one-on-one interaction in a fun environment.

Other highlights included a cleanup of the park, an opportunity to climb through the Milwaukee Fire Department's Survive Alive House, lunch from the MFD's Pizza Wagon and the Milwaukee Police Department's Ice Cream Truck and even a visit from the MPD's mounted patrol horse, Jake! It goes without saying there was some tennis as the first responders and kids took to the courts for some skill-building activities.

Event partners in addition to the MFD and MPD were Keep Greater Milwaukee Beautiful and Safe & Sound.



Fatoumata Komara was thrilled to win a new bike.

A Successful Summer

Reminiscences, Grateful Thanks and a Fond Farewell

It was a busy summer packed with so much laughter, connections and growth!

We made quite a few changes! With the tennis curriculum, we looked to combine game-based and form-based activities to put youth on a path for long-term development.

We had a lot of shadow swinging in the mornings and focused on basics. Which means coaches had to be clever in finding ways to keep kids engaged while doing static hitting and the same routines over and over again! (It's like the quote I share with our kids in the TEAM program: "To be extraordinary, we must do the ordinary an extraordinary number of times.")

We also introduced new interactive activities featuring arts and crafts, STEM projects and drama games. It was so fun to watch the kids work together and see all their creativity come to light.

Youth also spent time with STRYV365, which rocked a brand-new curriculum by bringing in new games and conversation starters to help kids learn positive strategies and practice using tools for managing themselves and dealing with stress.

There were so many great things that happened this summer, there's just no way I could write about all of them here! But you could ask any one of our kids about their experiences or better yet, come out and join in next summer!

Like every moment with MTEF, summer was filled with tons of tennis but it also was filled with hope, love, and care. I am so proud of the young people I have been blessed to meet and come to know over these last few years. I am grateful to them for

letting me into their lives. I am grateful to them for allowing me to grow alongside them, making mistakes and happy memories along the way.

I'm thankful to the families who put their trust in me to play a part in their children's lives. You have all been a blessing in my life.

To the board: to Beth, Mike, Kurt, Denny and Rachael, thank you so much for your support and guidance.

To everyone who has supported MTEF over the years, whether helping out on court, providing grips for kids' rackets, doing equipment donations, donating a penny for every "like" a YouTube video gets, for every word of encouragement whether to me or one of our kids, I need you know it mattered. You made a difference.

With a full heart, I need to tell you that I am stepping down from my position here at MTEF and am moving in a different direction where I hope I can continue to make a positive impact in our community.

On August 2, I was sworn in as a police officer with the Wauwatosa Police Department and will be finishing the academy in early December.

I am excited to take on this new challenge and will use everything that I learned here with you all in this next chapter of my life. Thank you!



Tony Broaden
Tennis
Director's
Message

Grants and Gifts

Corporate

GE Foundation
Network for Good (FB) Donor Advised Fund
TisBest Philanthropy
UBS
United Way of Greater Milwaukee and Waukesha Counties

Grants

Anon Charitable Trust
Bader Philanthropies
Greater Milwaukee Association of Realtors Youth Foundation
Harri Hoffman Family Foundation
Herb Kohl Philanthropies
RA Stevens Family Foundation
Frieda and William Hunt Memorial Trust
USTA Foundation
USTA/Midwest Tennis & Education Foundation
WE Energies Foundation
Windhover Foundation
Wisconsin Tennis Association

Individual

Joy Albi
Rachael and Marty Badt
Jennifer Bergman
Bradley Brin
Deborah Burgess
Cheri Cope

Timon and Rachel Corwin
Laurie and Chris Covert
Sarah Cyganiak
Trevor and Maureen D'Souza
Sallie and Don Davis
Jeff Davis and Rachael Schneider
William Deshur
Brian Ellenbecker
Makda Fessahaye
Barb Franzen
Susan W. Freeman
Steve and Marla Frydman
Eugenia Gengler
Julie and Andrew Gusko
John Haburjak
Kathleen Herfel
Jack Hill
Sharon and Michael Hipp
Elizabeth and Mark Horneffer
Hal Horneffer
Kim and David Irwin
Kurt and Kari Janavitz
Nancy and David Jensen
Dezarae Jones-Hartwig
Ted Jordan
Jodi and Pat Keller
Marjorie Kozlowski
Patrick Krill
Adam Laluzerne
Jill and Patrick Marget
Nate and Amy Marshall

Ian Martin – *In Memory of Aaron B. Martin, Sr.*
Julie Miller
Margaret Miller
Sara Miller
Aoy and Michael Mitchell
Katie Mosack
Munson Fence
Donna Drosner and Jeff Pink
Caran and Joel Quadracci
Rowena Ragonese
Mike and Ellen Mary Raster
Cathy and Tom Ryan
Denny Schackter and Patti Lock
Chris and Debbie Schifano
Kate and Will Schoyer
Jean Stevens
Therese and Paul Stockhausen
Camille Taylor
Frank and Kathleen Thometz
Emily Van Dunk
Diane and Carl Veenendaal
Blair Wangman
Ian Westermann
Bryan Wilson
Lisa and Ryan Winders
Charles and Peggy Yang
Kay and Richard Yuspeh
Herb Hentzen Scholarship
Mary Fran Cahill

Scholarship to Honor Hentzen

MTEF hopes to soon establish a college scholarship in memory of a longtime board member Herbert D. Hentzen, Jr.

Hentzen joined the board in 2000 and served until the time of his death in 2021 at the age of 93. He was the foundation's treasurer from 2001 to 2005.



Hentzen

The scholarship, the amount as yet to be determined, will be awarded annually to an MTEF participant who embodies the values and love of tennis that Hentzen was known for during his lifetime.

Because Hentzen held a degree in chemical engineering from the University of Wisconsin and, for decades, was president of his family's chemical coatings business one of the criteria will be that the recipient be planning to major in a STEM or business field. Since he so highly valued

education, participants planning education majors also will be eligible.

MTEF is seeking a minimum of \$50,000 to fund the Hentzen Scholarship in perpetuity. About \$20,000 has been raised so far.

If you would like to help with funding the Hentzen Scholarship, please visit mtef.com and click on the Donate button, then indicate you are making a contribution in memory of Herbert D. Hentzen, Jr. or use the form on Page 7.



Ensure the future
of tennis, education and mentoring
for Milwaukee's youth by naming the
Milwaukee Tennis & Education Foundation
(EIN: 39-1317061) in your will or estate plan.

To learn more,
contact your financial advisor.

Be a Friend! Donate Now!



Over the past 21 years, MTEF's programming has touched the lives of more than 40,000 underserved Milwaukee youngsters with tennis instruction and mentoring plus academics, life skills and fitness/nutrition education.

For many years, the USTA Foundation has designated MTEF as a 4-Star NJTL chapter – one of only 25 out of more than 250 in the entire United States. MTEF was recognized as the National NJTL Chapter of the Year in 2006 and the Midwest NJTL Chapter of the Year in 2004, 2005 and 2009 and the national No. 2 First Serve chapter in 2010.

MTEF programs are possible because of the generosity of Friends in our community, like you, who help us sustain and grow our programming. You can make a big difference in a child's life with your gift of any size.

Donations can be made online at mtef.com/donate or mail this form with your check or credit card information. Donors will be recognized in the next issue of *The Match*. Here are some ways you can help:

Sponsorships

____ Summer Programming
 ____ Merrill Park
 ____ Brown Deer

____ Year-round TEAM

____ Scholarships
 ____ Herbert D. Hentzen, Jr. Scholarship
 ____ General Scholarship

____ Tutors and Tennis Instructors

Area of Greatest Need

____ Please use my donation wherever it is most needed.

Volunteers

Another way to be a Friend is to donate your time.
Projects/areas of need are:

____ IT/Website
____ Data Input/Analysis
____ Committee Interest
(Tennis Ball, Media, Fundraising,
Program etc.)
____ Mentor

To Donate Now

Copy this page. Make your choice(s) from the list above, fill in the information below and mail this page to:

MTEF, 3000 N. Sherman Blvd., Milwaukee, WI 53210. Make checks payable to MTEF.

Name: _____ Phone: _____ Amount: _____
Address: _____ City: _____
State: _____ ZIP code: _____ Email: _____
Credit Card: MasterCard Visa
Number: _____ Expiry: ____/____ Validation: _____ Signature: _____

Or log onto www.mtef.com and click on *Donate* or *Get Involved*. Donations are fully tax-deductible.

Partnerships Continued at Summer Camp



The foundation continued its longstanding partnerships with STRYV365, the Milwaukee Public Library's Summer Reading Program and the Brown Deer Parks and Recreation Department during MTEF's Summer Camp. **Left:** Holly Langenburg and JP Kiatoukasy (center) of STRYV365 worked with campers on a life-skills lesson. **Below left:** Campers chose books from the Milwaukee Public Library to take home with them on the final day of camp. **Below:** Coach Ronan More O'Ferrell drilled Liam McCollough on forehands at Brown Deer High School.



MTEF Alums Gained a Lot From Their Years as Participants

From Page 1 "I decided to come back and teach at MTEF this summer to not only get the perspective from a coach's standpoint but also to reconnect myself with the program that played a significant role in my life," said Young.

"MTEF has not only helped me further my tennis career," she said, "but the program has taught me a variety of life skills such as communication, leadership, critical thinking skills and so much more. MTEF really played a big role in my life and who I am as a person today."

Young is studying biomedical science at Marquette University.

Idris Badani, a lead coach at Merrill, also became involved with MTEF when he was 8. After finishing high school, he undertook training as a pastry chef at MATC, where he was a member of the school's very first men's varsity tennis team.

Badani has been coaching MTEF tennis since he was 18, both summer and year-round.

"One thing that MTEF taught me, at a young age, was to always be fair - on court and in day-to-day life. It keeps tennis more enjoyable and it keeps you happy in life," he said.

"I always loved MTEF as a student," he continued, "and as a coach. I enjoy teaching and helping others grow and this is the perfect program for me to do that in."

He currently is working for MTEF as a coach year round. Samiyah Braylock, an assistant coach at Merrill, entered the MTEF program when she was 9.

"Being part of tennis through MTEF has shown me that everything in life is earned," Braylock said.

"I enjoyed working with the kids that I also grew up with," she continued, adding that her experiences as a participant helped her in mentoring the youngsters she coached.

"I loved the new structure of the program and I loved seeing the kids grow even in this small amount of time," she said.

Braylock works as a teacher's aide at St. Marcus Lutheran School.

Makayla Butler has been involved with MTEF since 2018.

"I returned to coach at MTEF because I love the energy of the atmosphere when students and coaches reunite," Butler said. "I find it very interesting how well students connect with coaches and have the ability to become coaches themselves one day."

"Coaching for MTEF, I've been able to progress (each student's) game individually to where they are confident in their performance," she said.

Butler works as a paraprofessional for the Milwaukee Public Schools at Bryant Elementary School.

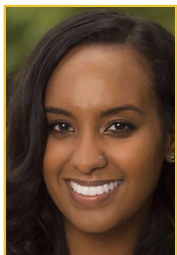
Are we all proud of them? You bet we are!

Welcome to MTEF

Five New Directors Elected to Foundation's Board

Five new members were elected to the Milwaukee Tennis & Education Foundation's board of directors at the organization's Feb. 10 meeting. The group brings a wide variety of welcome education and experience to the foundation's leadership.

Makda Fessahaye is vice chancellor for human resources at the University of Wisconsin-Milwaukee.



Previously, she served as the director of the Department of Employee Relations and the City of Milwaukee's chief human resources officer.

Prior to that she was the administrator of the State of Wisconsin Department of Corrections' Division of Adult Institutions.

Fessahaye is a member of numerous professional groups and recently was named as one of the Milwaukee Business Journal's 2022

40 Under 40.

She earned a BS degree in communications studies from Northwestern University and a law degree from Marquette University.

Fessahaye's connection to tennis began early. "My father, inspired by Richard Williams, attempted to teach me how to play tennis at Lincoln Park as a kid. Obviously, he was not Richard Williams and I'm no Serena or Venus Williams. I did, however, pick up the racquet again in high school, where I played on the junior varsity (singles) and varsity (doubles) tennis teams for Dominican High School. I've continued to play tennis on and off over the years with friends," she said.

Fessahaye discovered MTEF last summer through Milwaukee Parks and Recreation when she was looking to take some tennis lessons.

Ted Jordan is a certified ethical hacker and corporate cybersecurity trainer for the Fortune 1000 and the federal government.

He formerly ran Funutation Tech Camps, Inc. where he taught more than 5,000 children nationwide to write computer games and program battle robots. In 2017 he sold the firm, and now consults in cybersecurity.



In 2020, he published the CompTIA Linux+ Certification Exam Guide (Exam XK0-004) through McGraw-Hill Publishers and the CISSP (ISC)² Certification Practice Exams and Tests: Over 1,000 practice questions and explanations through Packt Publishing.

Jordan contributes to the open-source community including LibreOffice, OpenOffice, Free Software Foundation, Wikipedia and others. He also partners with communities to mentor young students in coding and math.

In his spare time, Jordan enjoys tennis, golf, and singing karaoke.

He earned a BS degree General Motors Institute of Technology (now Kettering University) and an MS from the University of California-Berkeley.

Camille Taylor has been Private Wealth Management corporate recruiter for Robert W. Baird & Co. since July 2021.

In her position she serves as a consultant to branch managers, supervisors and market directors by making recommendations regarding candidates, hiring needs, compensation, and onboarding logistics. She manages the full life-cycle recruitment process for Private Wealth Management, including interview management, sourcing, requisition management, prospect management, resume reviews and more.



She began her career at Baird in 2019 as a human resources operations specialist after working at several other companies in various HR capacities.

Taylor has a BA degree in psychology from the University of Wisconsin-Milwaukee, an MBA from Cardinal Stritch University and an MA in human resources management from Concordia University.

She said she has been involved in tennis casually since childhood and learned about MTEF from a close friend in Professional Dimensions.

"When I heard what MTEF was doing for the community, I knew I had to be involved.... Having the ability to be a part of an organization that is providing opportunities to the community they might not otherwise have is amazing."

Vukasin Teofanovic may be familiar to many in the Milwaukee tennis community as a former star player for the Marquette University Golden Eagles men's varsity tennis team.

He now is vice president of financial planning and analysis for Kinex Medical Co., where he has worked in several positions since 2015. In this job, he serves as mergers and acquisitions lead where he is responsible for managing the due diligence stage, developing the deal structure, and assisting the cross-functional teams during the integration phase.



On the tennis front, Teofanovic was a volunteer assistant coach for the Marquette men's tennis team from 2014-2019 and worked as a tennis pro at Western Racquet Club in Elm Grove from 2015 to 2018.

He earned a BA degree in finance at Marquette and holds an Executive MBA degree from the University of Wisconsin-Milwaukee.

Tennis has profoundly impacted his life.

"This impact goes well beyond my playing career," Teofanovic said. "Tennis has shaped me as a person. It provided me numerous life opportunities that I would not have otherwise. Most importantly it has introduced me to amazing people throughout the years that have all had a profound impact on my life."

"I love the Milwaukee community and what MTEF is striving to accomplish," he added. "I hope that by joining the board I can, at least in a small way, give back to the community as I have certainly benefited from others doing so

Continued on Page 10

MTEF Hopes 23rd Tennis Ball Will Net \$80,000

From Page 1 auction items. Also returning during the cocktail hour is the always appreciated wine pull, including some bottles worth more than \$100.

A multi-course gourmet dinner will follow. Catered by Bartolatta Restaurants, it's sure to be sumptuous!

MTEF is delighted to note that TMJ4 sportscaster Lance



Allan

Allan will return for his third stint as emcee and live auction auctioneer.

He's sure to keep things entertaining and running smoothly during the annual program including speeches from current MTEF participants and a new MTEF video.

A 50-50 raffle and an up-down paddle competition will round out the program.

At evening's end, Part Time Models will set your feet a-dancing!

You may have caught this high energy cover band at the 2022 Summerfest. If so, you know their eclectic repertoire includes funk, blues, pop and more.

The group includes Brian McCarty (vocals), Mark Horneffer (vocals, guitars and keyboard), Dave Sinense (vocals and bass), Don Momsen (drums), Jim Rayford (trumpet and percussion), Chris Bastin (trumpet) and Robert Ziobro (alto saxophone).

It goes without saying that no matter how much fun the Ball will be, it has a serious bottom line. As mentioned earlier, its primary purpose is to raise money, so sponsorships are essential

23rd Annual Tennis Ball

Serving Up Opportunity for Today's Youth

Saturday NOVEMBER 12, 2022

Italian Community Center

631 E. CHICAGO STREET, MILWAUKEE, WI 53202

6:00 PM - COCKTAILS & SILENT AUCTION
 7:30 PM - DINNER, EVENING PROGRAM & LIVE AUCTION
 9:30 P.M. - LIVE MUSIC & DANCING
FEATURING PART TIME MODELS

mtef.com/Ab2022

COCKTAIL ATTIRE — RSVP BY OCTOBER 28

to the evening's success.

Corporate and individual sponsorships are already available online in amounts ranging from \$10,000 to \$500, with benefits varying by level. Most include a table for eight.

Individual tickets will be priced at \$150 or \$300 per couple with a single bidding number.

It's good to keep in mind that the seats fill up fast for this perennially popular event, so think about reserving your spots sooner rather than later.

For detailed information or to sign up, visit mtef.com and click on the Events tab.



Dinner was served at last year's MTEF Tennis Ball at the Italian Community Center.

New Directors Aim to Help MTEF Improve the Community

From Page 9 during my tennis career."

Bridget Whitaker currently serves as executive director for the Milwaukee nonprofit Safe & Sound.

In her role she is charged with a mission of creating safe neighborhoods in the city that is centered on the role that residents, youth, law enforcement and other community organizations play in this collaborative effort.



Whitaker also serves on the board for Signature Dance Company, the Social Development Foundation and the 501(c)3 arm of her local chapter sorority, Sigma Gamma

Rho Sorority, Inc.

She graduated from Marquette University with a BA in sociology/human resource management, earned a master of management degree from the University of Phoenix and a juris doctorate from Concord Law School.

Whitaker said she became acquainted with MTEF many years ago when her children attended the foundation's summer camp. She said she much appreciated the opportunity to expose them to new team-building and character-developing programs.

"As I continue to champion access and resources for underserved black and brown children, I welcome the opportunity to further the cause of MTEF," she said.

MTEF Hires Keenan as Controller

Ann J. Keenan recently joined MTEF as its new controller. She succeeds Barbara Franzen in the post.

Keenan, who holds a BA in mathematics from Providence College in Providence, RI and an MBA from Regis University in Denver, CO., has headed her own accounting firm since 2016.

Prior to that she worked at several other accounting firms in various positions ranging from administrative assistant to senior analyst.

Born and raised in Central Pennsylvania, Keenan moved to Wisconsin 14 years ago. She and her husband, who is a professor at the University of Wisconsin-Milwaukee have two daughters who share their mother's love of competitive swimming.

Keenan was a member of the Providence College Women's varsity swimming team from 1992-1996 and its co-captain from 1995 to 1996. She still participates in an organized adult Masters group but also enjoys hiking, biking, camping and reading in her spare time.



Keenan



PLAY TENNIS?
WANNA HAVE FUN &
CHANGE LIVES?

TENNIS VOLUNTEERS NEEDED

FLEXIBLE SCHEDULE

PAID POSITIONS ALSO AVAILABLE

WWW.MTEF.COM/MTEF-VOLUNTEER

DO YOU
FOLLOW
& INTERACT
WITH MTEF?



@milwaukeeennisandeducationfoundation



MTEFTENNIS



www.linkedin.com/company/milwaukee-tennis-and-education-foundation-mtef/



Make sure we have your email so that you don't miss our eNewsletters. Go to mtef.com and fill out our interest form or email info@mtef.com.

Milwaukee Tennis & Education Foundation
Attn: Rachael Badt
3000 N. Sherman Blvd.
Milwaukee, WI 53210



PICKLEBALL & TENNIS BENEFIT EVENT

**MONDAY
SEPTEMBER 12**

**NORTH SHORE
COUNTRY CLUB**

3100 W Country Club Dr. Mequon

\$95 TENNIS OR PICKLEBALL
(INCLUDES COCKTAILS & DINNER)

\$60 COCKTAILS & DINNER ONLY

5-5:30 PM REGISTRATION
5:30-7:30 PM TENNIS OR PICKLEBALL
7:30-8:30 PM COCKTAILS & DINNER

REGISTER BY SEPTEMBER 7 AT [MTEF.COM/EVENTS](https://mtef.com/events)